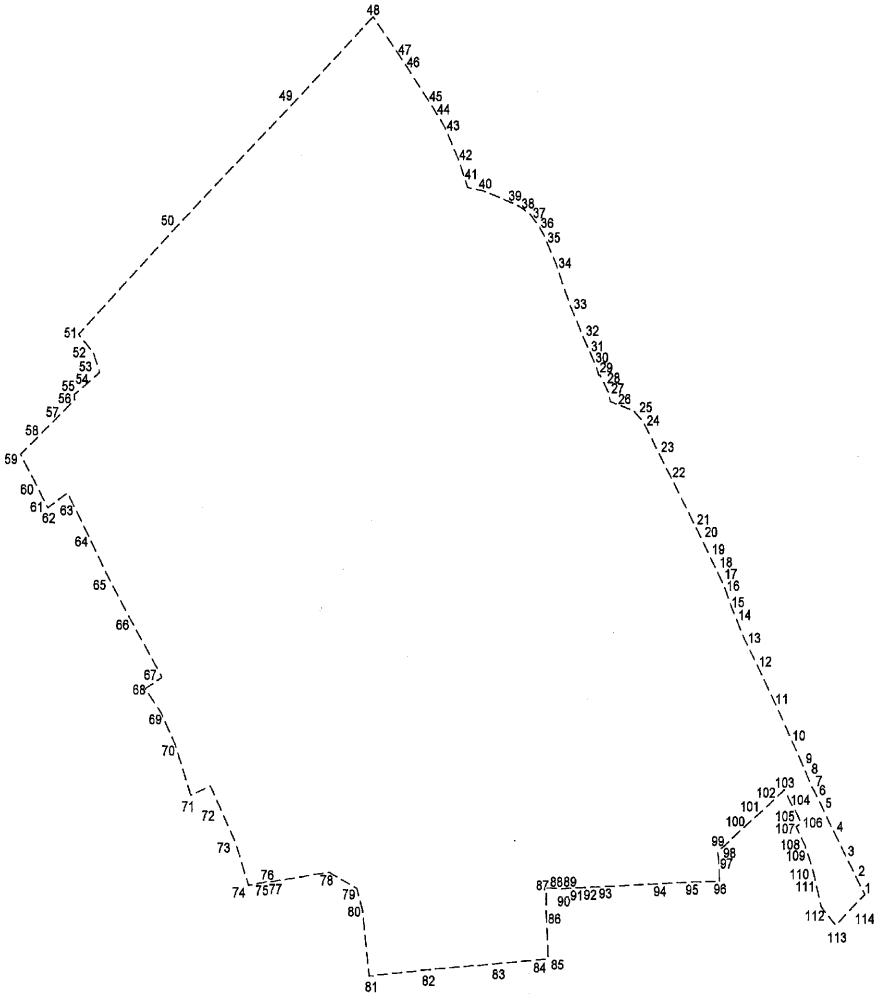


11/1/2013 TARİHLİ VE 2013/4204 SAYILI
KARARNAMENİN EKİ

KROKİ VE LİSTE

SAKARYA İLİ HENDEK İLÇESİ RİSKLİ ALAN
SINIR KROKİSİ



(63328.34M2)

KOORDINAT LİSTESİ

NoktaNo	Y	X
1	562,955.927	4,518,342.828
2	562,952.418	4,518,348.628
3	562,946.324	4,518,358.703
4	562,941.759	4,518,366.471
5	562,937.194	4,518,374.238
6	562,934.821	4,518,378.278
7	562,933.184	4,518,380.875
8	562,930.259	4,518,386.454
9	562,929.549	4,518,387.809
10	562,924.907	4,518,396.486
11	562,917.409	4,518,410.485
12	562,909.068	4,518,424.725
13	562,904.072	4,518,433.004
14	562,899.007	4,518,443.042
15	562,898.667	4,518,443.713
16	562,894.940	4,518,452.077
17	562,893.266	4,518,454.953
18	562,891.227	4,518,458.275
19	562,888.778	4,518,462.551
20	562,885.345	4,518,468.594
21	562,883.218	4,518,472.070
22	562,872.063	4,518,490.463
23	562,866.392	4,518,499.854
24	562,860.545	4,518,509.536
25	562,858.392	4,518,513.509
26	562,846.343	4,518,516.772
27	562,845.714	4,518,519.739
28	562,843.222	4,518,523.900
29	562,842.022	4,518,525.903
30	562,841.478	4,518,526.129
31	562,840.091	4,518,528.542
32	562,834.969	4,518,539.312
33	562,829.365	4,518,550.564
34	562,822.995	4,518,565.618
35	562,818.350	4,518,574.834
36	562,816.080	4,518,578.389
37	562,814.344	4,518,580.259
38	562,812.089	4,518,582.706
39	562,806.765	4,518,585.785
40	562,792.506	4,518,590.729
41	562,785.603	4,518,591.978
42	562,781.806	4,518,601.604
43	562,778.036	4,518,612.849
44	562,772.477	4,518,617.679
45	562,769.835	4,518,621.264
46	562,758.412	4,518,635.739
47	562,756.990	4,518,637.541
48	562,745.135	4,518,652.007
49	562,711.441	4,518,621.148
50	562,662.738	4,518,577.386
51	562,620.653	4,518,538.574
52	562,626.888	4,518,532.133
53	562,629.698	4,518,525.216
54	562,618.954	4,518,517.275
55	562,619.156	4,518,515.372
56	562,618.641	4,518,515.017
57	562,614.736	4,518,511.659
58	562,604.576	4,518,502.922

NoktaNo	Y	X
59	562,596.422	4,518,495.910
60	562,602.494	4,518,485.950
61	562,605.511	4,518,481.074
62	562,607.954	4,518,477.087
63	562,616.268	4,518,482.473
64	562,624.857	4,518,467.792
65	562,633.425	4,518,453.136
66	562,642.556	4,518,438.813
67	562,656.865	4,518,417.673
68	562,649.549	4,518,413.598
69	562,656.606	4,518,405.085
70	562,662.450	4,518,394.080
71	562,669.209	4,518,376.114
72	562,677.629	4,518,379.468
73	562,688.206	4,518,359.667
74	562,693.951	4,518,344.249
75	562,700.359	4,518,345.421
76	562,701.688	4,518,345.660
77	562,701.733	4,518,345.389
78	562,727.836	4,518,349.252
79	562,739.864	4,518,343.550
80	562,742.253	4,518,335.922
81	562,745.285	4,518,312.401
82	562,769.470	4,518,314.907
83	562,799.370	4,518,317.350
84	562,818.003	4,518,318.673
85	562,821.373	4,518,319.325
86	562,820.314	4,518,337.160
87	562,820.472	4,518,344.402
88	562,828.468	4,518,344.199
89	562,828.437	4,518,344.275
90	562,829.436	4,518,344.315
91	562,830.505	4,518,344.356
92	562,837.882	4,518,344.879
93	562,841.333	4,518,344.906
94	562,866.546	4,518,346.118
95	562,880.091	4,518,346.771
96	562,893.964	4,518,347.215
97	562,893.312	4,518,356.151
98	562,893.000	4,518,357.818
99	562,895.790	4,518,359.772
100	562,903.666	4,518,365.974
101	562,909.239	4,518,370.234
102	562,915.030	4,518,374.512
103	562,921.507	4,518,379.874
104	562,924.562	4,518,374.710
105	562,926.385	4,518,372.206
106	562,928.641	4,518,368.108
107	562,926.543	4,518,366.707
108	562,928.867	4,518,362.810
109	562,930.223	4,518,360.217
110	562,933.216	4,518,353.077
111	562,934.037	4,518,350.151
112	562,937.358	4,518,338.169
113	562,943.653	4,518,331.823
114	562,950.537	4,518,338.079